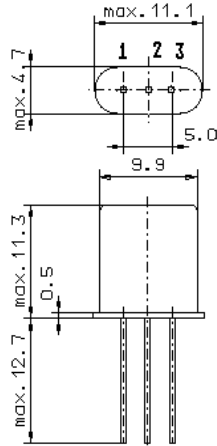


Specification for monolithic crystal filter:

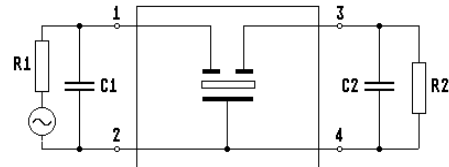
MQF 10.0-2000 / 06

1. General

1.1. Package:



GH3



- 1.2. Type name: MQF 10.0-2000/06
- 1.3. Number of poles: 2
- 1.4. Operable temperature range: -25°C to +80°C
- 1.5. Operating temperature range: -20°C to +70°C
- 1.6. Storage temperature range: -55°C to +80°C

2. Electric values

- 2.1. Nominal centre frequency fo: 10.0000 MHz
- 2.2. **Pass band**
 - 2.2.1. Bandwidth between 3 dB - frequencies: $\geq f_0 \pm 10.0$ kHz
 - 2.2.2. Ripple: ≤ 0.5 dB at $f_0 \pm 5.0$ kHz
 - 2.2.3. Insertion loss: ≤ 2.0 dB
(measured on smallest attenuation in pass band)
- 2.3. **Stop band**
 - 2.3.1. $f_0 \pm 35$ kHz: ≥ 15 dB
 - 2.3.2. Alternate attenuation: ≥ 40 dB
 - 2.3.3. Spurious responses: ≥ 10 dB
- 2.4. Terminating impedance (input and output): $4500 \Omega // 0.5$ pF
- 2.5. Intermodulation
 - frequency 1 / 2: $f_0 \pm 25$ kHz
 - frequency 3 / 4: $f_0 \pm 50$ kHz
 - input power level: - 30 dBm
 - IM: ≥ 75 dB
- 3. Marking on the case: manufacturer, date code
10.0-2000/06
- 4. Environment conditions: Corresponding to Telefilter [CF001](#)

Edited by: _____ date: _____ name: _____