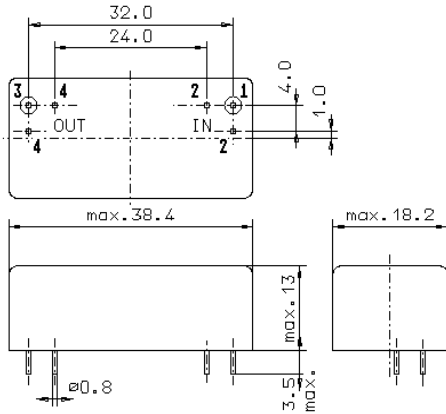


Specification for monolithic crystal filter:

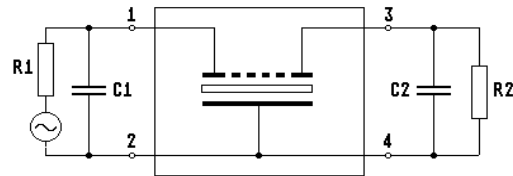
MQF 10.7018-0300/03

1. General

1.1. Package:



GM17



- 1.2. Type name: MQF 10.7018-0300/03
- 1.3. Number of poles: 6
- 1.4. Operating temperature range: -20°C to +70°C
- 1.5. Storage temperature range: -45°C to +85°C

2. Electric values

- 2.1. Nominal centre frequency fo: 10.7018 MHz
- 2.2. **Pass band**
 - 2.2.1. Bandwidth between 3 dB - frequencies: $\geq f_o \pm 1.3$ kHz
 - 2.2.2. Ripple: ≤ 2.0 dB at $f_o \pm 1.1$ kHz
 - 2.2.3. Insertion loss: ≤ 3.0 dB
(measured on smallest attenuation in pass band)
- 2.3. **Stop band**
 - 2.3.1. $f_o \pm 5$ kHz: ≥ 60 dB
 - 2.3.2. Alternate attenuation: ≥ 85 dB (except spurious)
- 2.4. Terminating impedance (input and output): $50 \Omega // 0$ pF
- 2.5. Maximum input power level: +10 / +20 (working / non-damaged)
- 2.6. Intermodulation:
 - frequency 1: 10.7028 Mhz
 - frequency 2: 10.7008 MHz
 - input power level at pin 1(input): 0 dBm
 - IM (IP3 > +33 dBm): > 66 dB (referred to input power level)

- 3. Marking:

HI
MQF 10.7018-3.0 kHz
date code

- 4. Environment conditions: Corresponding to Telefilter CF001

Edited by: _____ date: _____ name: _____