

Monolithic crystal filter

MQF10.7-1200/01



Application

- 2 pol filter
- i.f.- filter
- use in mobile and stationary transceivers

Limiting values

		Unit	Value
Nominal frequency	f_0	MHz	10.7
Insertion loss		dB	< 1.5
Pass band at 3.0dB		kHz	$\pm > 6$
Ripple in pass band	$f_0 \pm 3$ kHz	dB	< 0.5
Stop band attenuation	$f_0 \pm 25$ kHz	dB	> 20
Alternate attenuation	$f_0 + 0.3...1$ MHz	dB	> 35
	$f_0 - 0.2...1$ MHz	dB	> 40
Spurious responses	$f_0 + 25$ kHz.....+1 MHz	dB	> 15

Terminating impedance Z

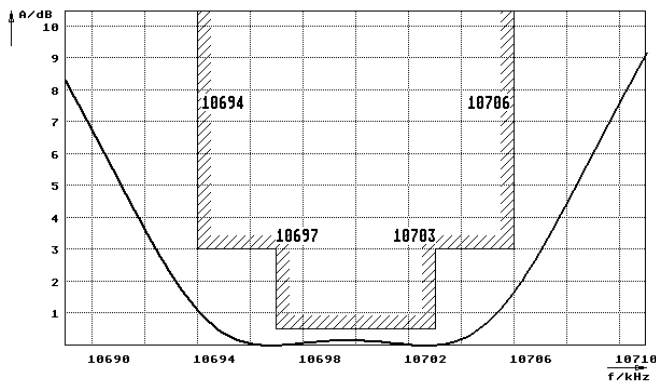
R1 C1	Ohm/pF	2500 2.5
R2 C2	Ohm/pF	2500 2.5

Operating temp. range
Storage temp. range
Environment conditions

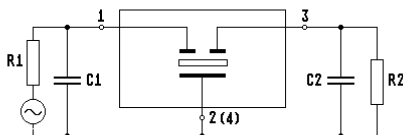
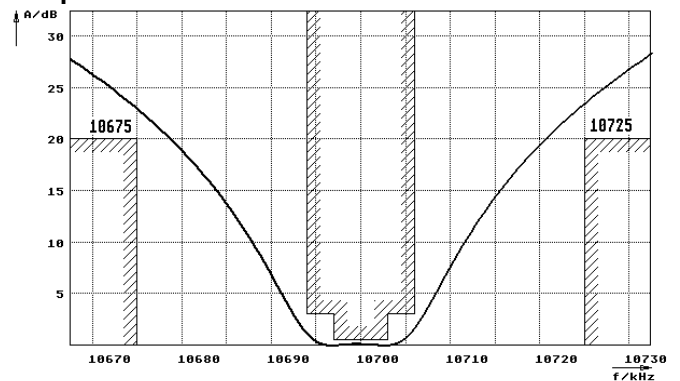
°C -20... +70
°C -35... +85
according to CF001

Characteristics MQF10.7-1200/01

Pass band



Stop band



Pin connections:

1	Input
2	Ground-Input
3	Output
4	Ground-Output

