

Monolithic crystal filter

MQF10.7-1500/01



Application

- 2 pol filter
- i.f.- filter
- use in mobile and stationary transceivers

Limiting values

		Unit	Value
Nominal frequency	f_0	MHz	10.7
Insertion loss		dB	< 0.5
Pass band at 3.0dB		kHz	$\pm > 7.5$
Ripple in pass band	$f_0 \pm 5.5$ kHz	dB	< 1.0
Stop band attenuation	$f_0 \pm 30 \dots 150$ kHz	dB	> 20
Alternate attenuation	$f_0 \pm 150 \dots 500$ kHz	dB	> 40
Spurious responses		dB	> 15

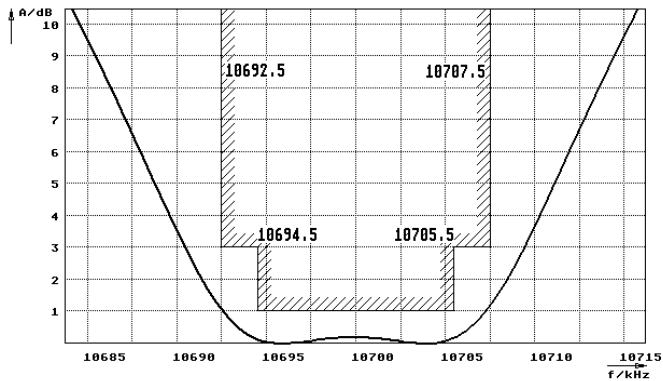
Terminating impedance Z

R1 C1	Ohm/pF	3000 0
R2 C2	Ohm/pF	3000 0

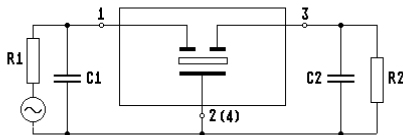
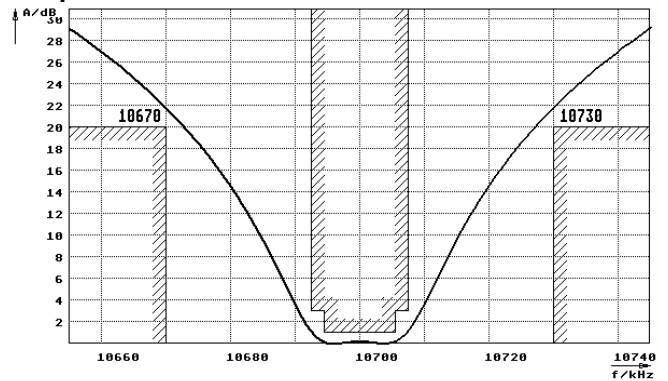
Operating temp. range	°C	+25... +70
-----------------------	----	------------

Characteristics MQF10.7-1500/01

Pass band



Stop band



- Pin connections:
- 1 Input
 - 2 Ground-Input
 - 3 Output
 - 4 Ground-Output

