

Monolithic crystal filter

MQF10.7-3000/16



Application

- 12 pol filter
- i.f.- filter
- use in mobile and stationary transceivers

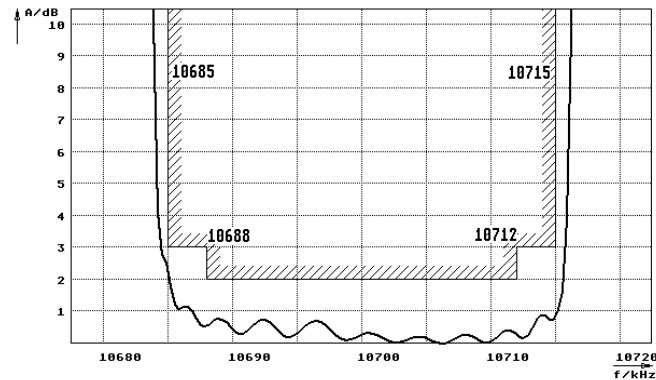
Limiting values		Unit	Value
Center frequency	f_0	MHz	10.7
Insertion loss		dB	≤ 4.0
Pass band at 3.0 dB		kHz	± 15.00
Ripple in pass band	$f_0 \pm 12.00$ kHz	dB	≤ 2.0
Stop band attenuation	$f_0 \pm 22.5$ kHz	dB	≥ 70
	$f_0 - 26$ kHz	dB	> 90
	$f_0 - 25$ kHz	dB	> 86
	$f_0 + 25$ kHz	dB	> 90
Alternate attenuation	$f_0 - 26 \dots 1000$ kHz	dB	> 90
	$f_0 + 25 \dots 1000$ kHz	dB	> 90

Terminating impedance Z		Ohm/pF	Value
R1 C1		Ohm/pF	50 0
R2 C2		Ohm/pF	50 0

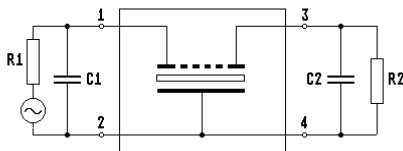
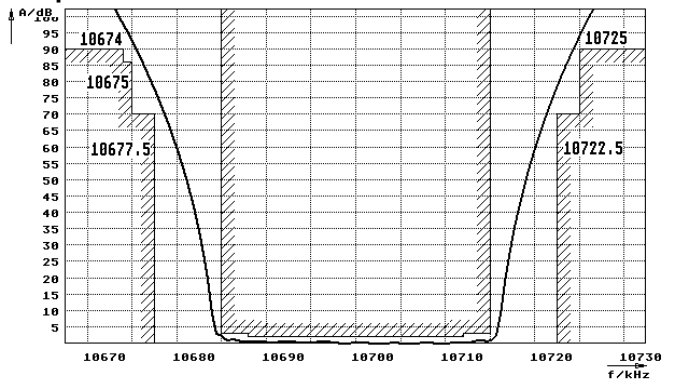
Operating temp. range	° C	Value
		-20... +70

Characteristics MQF10.7-3000/16

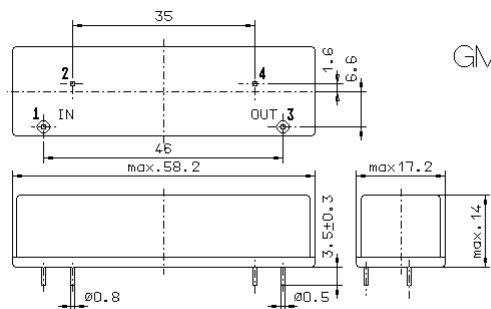
Pass band



Stop band



- Pin connections:
- 1 Input
 - 2 Ground-Input
 - 3 Output
 - 4 Ground-Output



GM27