

Monolithic crystal filter

MQF10.7-3000/17



Application

- 10 pol filter
- i.f.- filter
- use in mobile and stationary transceivers

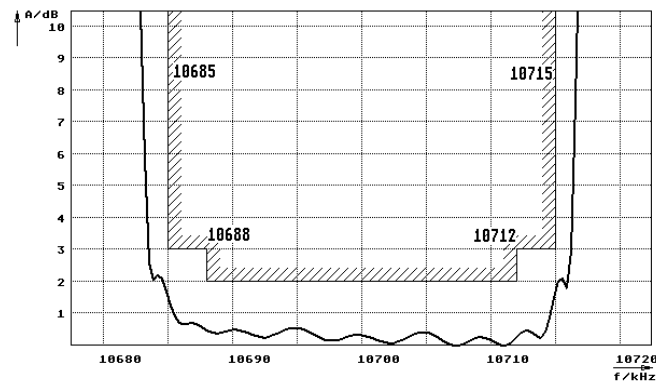
Limiting values		Unit	Value
Nominal frequency	f_0	MHz	10.7
Insertion loss		dB	< 4.0
Pass band at 3.0dB		kHz	$\pm > 15$
Ripple in pass band	$f_0 \pm 12$ kHz	dB	< 2.0
Stop band attenuation	$f_0 \pm 30$ kHz	dB	> 70
	$f_0 \pm 40$ kHz	dB	> 90
Alternate attenuation	$f_0 \pm 40 \dots 500$ kHz	dB	> 90
Spurious responses	10.750...10.756 MHz	dB	> 70

Terminating impedance Z			
R1 C1		Ohm/pF	910 25
R2 C2		Ohm/pF	910 25

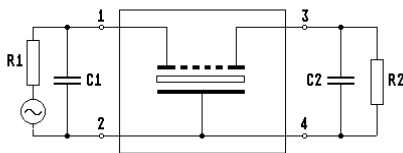
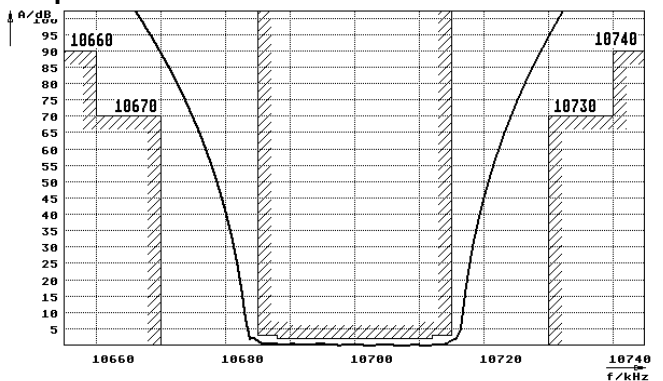
Operating temp. range	°C	-20... +70
-----------------------	----	------------

Characteristics MQF10.7-3000/17

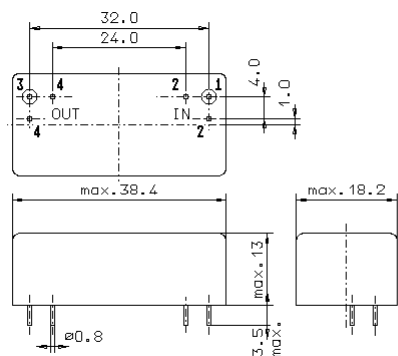
Pass band



Stop band



- Pin connections:
- 1 Input
 - 2 Ground-Input
 - 3 Output
 - 4 Ground-Output



GM17