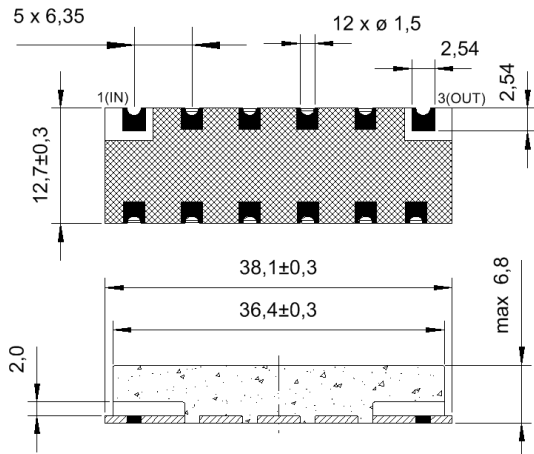


Specification for monolithic crystal filter:

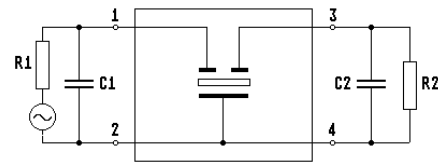
MQF 20.0-0600/06

1. General

1.1. Case:



GS 21



1: Input
3: Output
All the other 10pads are connected with GND

- 1.2. Type name: MQF 20.0-0600/06
- 1.3. Number of poles: 6
- 1.4. Operating temperature range: -20°C to +70°C
- 1.5. Storage temperature range: -45°C to +85°C

2. Electric values

- 2.1. Nominal centre frequency fo: 20.0 MHz
- 2.2. **Pass band**
 - 2.2.1. Bandwidth between 3 dB - frequencies: > fo ± 3 kHz
 - 2.2.2. Ripple: < 2.0 dB at fo ± 2.0 kHz
 - 2.2.3. Insertion loss: < 3.5 dB
(measured on smallest attenuation in pass band)
- 2.3. **Stop band**
 - 2.3.1. fo ± 10 kHz > 40 dB
 - 2.3.2. fo ± 12.5 kHz > 60 dB
 - 2.3.3. Alternate attenuation: > 60 dB
- 2.4. Terminating impedance R//C (input and output): 50 Ω // 0 pF
- 2.5. Maximum input power (working / non-damaged) +0 dBm / +15 dBm
- 3. Marking on the case: manufacturer, date code
MQF 20.0-0600/06
- 4. Environment conditions: According to CF001

Edited by: _____ date: _____ name: _____