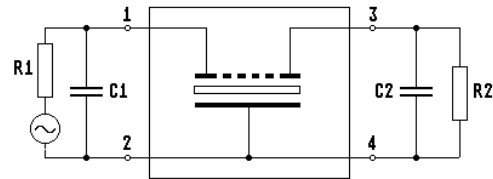
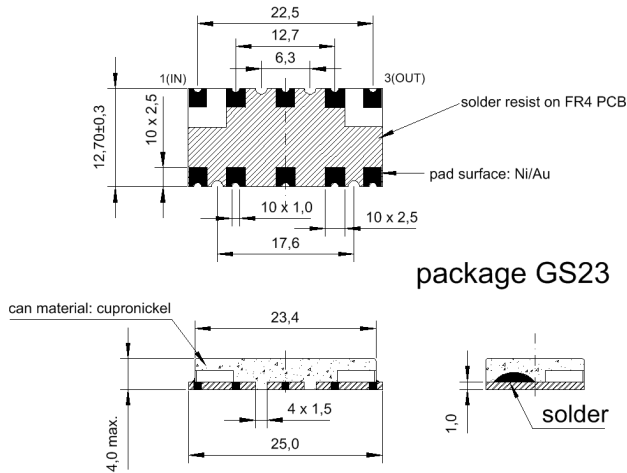


Specification for monolithic crystal filter: **MQF 21.4-10000/11**

**1. General**

**1.1. Package:**



- 1.2. Type name: MQF 21.4-10000/11
- 1.3. Number of poles: 2
- 1.4. Operating temperature range: -40°C to +85°C
- 1.5. Storage temperature range: -45°C to +85°C

**2. Electric values**

- 2.1. Nominal centre frequency  $f_0$ : 21.4 MHz
- 2.2. **Pass band**
  - 2.2.1. Centre frequency  $f_0$ : 21.4 MHz
  - 2.2.2. Bandwidth between 3 dB - frequencies:  $> f_0 \pm 50$  kHz
  - 2.2.3. Ripple:  $< 1.0$  dB at  $f_0 \pm 30.0$  kHz
  - 2.2.4. Insertion loss:  $< 5.0$  dB
  - ( measured on smallest attenuation in pass band )
  - 2.2.5. Group delay distortion:  $< 3 \mu s$  at  $f_0 \pm 30$  kHz
- 2.3. **Stop band**
  - 2.3.1.  $f_0 \pm 350$  kHz:  $> 30$  dB (except spurious)
  - 2.3.2. Alternate attenuation:  $> 45$  dB (except spurious)
- 2.4. Terminating impedance ( input and output ):  $50 \Omega // 0$  pF
- 2.5. Maximum input power level: 0 dBm / +15 dBm ( working / non-damaged )

- 3. Marking on the package: manufacturer yyww  
MQF 21.4-10000/11
- 4. Environment conditions: Corresponding to Telefilter's MCF MIL. standard

Edited by: \_\_\_\_\_ date: \_\_\_\_\_ name: \_\_\_\_\_