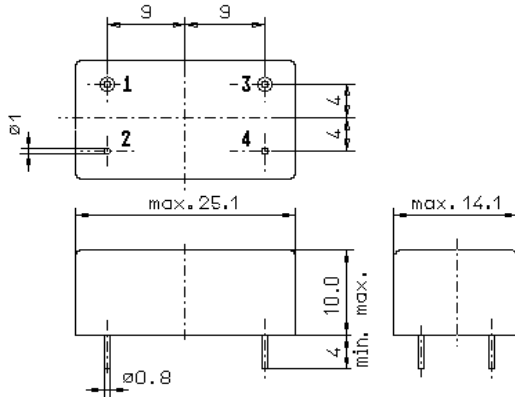


Specification for monolithic crystal filter:

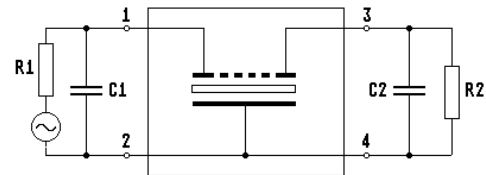
MQF 40.0-2500/03

1. General

1.1. Case:



GM3



- | | |
|-----------------------------------|---------------------|
| 1.2. Type name: | MQF 40.0-2500/03 |
| 1.3. Number of poles: | 8, fundamental mode |
| 1.4. Operable temperature range: | -30°C to +80°C |
| 1.5. Operating temperature range: | -20°C to +70°C |
| 1.6. Storage temperature range: | -35°C to +85°C |

2. Electric values

- | | |
|---|-------------------------------------|
| 2.1. Nominal centre frequency fo: | 40.0 MHz |
| 2.2. Pass band | |
| 2.2.1. Bandwidth between 3 dB - frequencies: | $\geq f_0 \pm 12.5$ kHz |
| 2.2.2. Ripple: | ≤ 2.0 dB at $f_0 \pm 10$ kHz |
| 2.2.3. Insertion loss:
(measured on smallest attenuation in pass band) | ≤ 4.0 dB |
| 2.3. Stop band | |
| 2.3.1. $f_0 \pm 100$ kHz | ≥ 90 dB |
| 2.3.2. Alternate attenuation | ≥ 85 dB |
| 2.3.3. Spurious responses | ≥ 70 dB |
| 2.4. Terminating impedance (input and output): | 50 Ω // 0 pF |
| 2.5. Intermodulation | |
| IP3: | ≥ 40 dBm |
| frequency 1: | $f_0 + 100$ kHz |
| frequency 2: | $f_0 + 200$ kHz |
| input power level: | 0 dBm |
| IM: | ≥ 80 dB |
| 3. Marking on the case: | firm, year week
MQF 40.0-2500/03 |
| 4. Environment conditions: | Corresponding to Telefilter F001 |

Edited by: _____ date: _____ name: _____