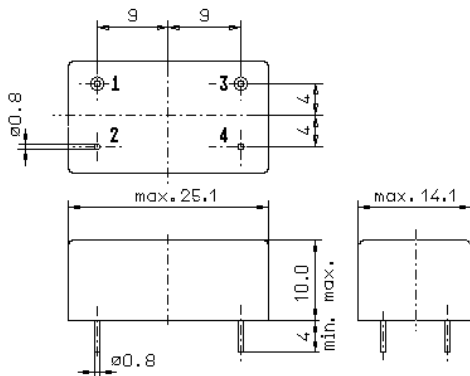


Specification for monolithic crystal filter:

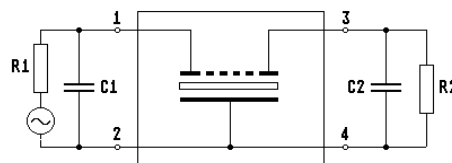
MQF 54.0-0600/03

1. General

1.1. Case:



GM3



- 1.2. Type name: MQF 54.0-0600/03
- 1.3. Number of poles: 6
- 1.4. Operating temperature range: -20°C to +70°C
- 1.5. Storage temperature range: -45°C to +85°C

2. Electric values

- 2.1. Nominal centre frequency fo: 54.0 MHz
- 2.2. **Pass band**
 - 2.2.1. Bandwidth between 3 dB - frequencies: $> f_o \pm 3.0 \text{ kHz}$
 - 2.2.2. Ripple: $< 2.0 \text{ dB at } f_o \pm 2.0 \text{ kHz}$
 - 2.2.3. Insertion loss: $< 7.0 \text{ dB}$
(measured on smallest attenuation in pass band)
- 2.3. **Stop band**
 - 2.3.1. $f_o \pm 11 \text{ kHz}$: $> 40 \text{ dB}$
 - 2.3.2. $f_o \pm 15 \text{ kHz}$: $> 60 \text{ dB}$
 - 2.3.3. Alternate Attenuation: $> 60 \text{ dB}$
- 2.4.1. Nomial input power level: -5 dBm
- 2.4.2. Maximal input power level: +10 dBm
- 2.5. Terminating impedance R//C (input and output): $50 \Omega // 0 \text{ pF}$
- 3. Marking on the case: manufacturer, date code
MQF 54.0-0600/03
- 4. Environment conditions: Corresponding to Telefilter CF001

Edited by: _____ date: _____ name: _____