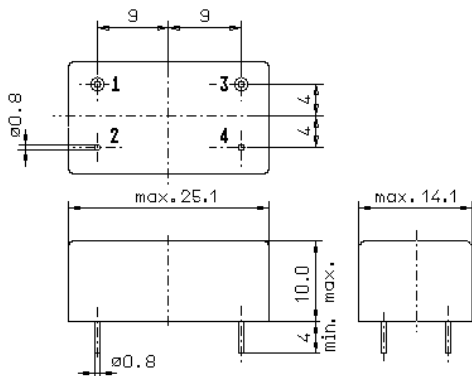


Specification for monolithic crystal filter:

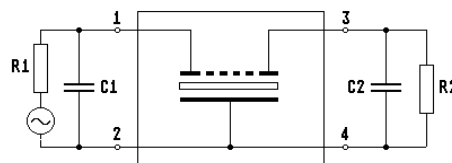
MQF 75.0-3600/08

1. General

1.1. Package:



GM3



- 1.2. Type name: MQF 75.0-3600/08
- 1.3. Number of poles: 8, fundamental mode
- 1.4. Operating temperature range: -40°C to +85°C
- 1.5. Storage temperature range: -45°C to +85°C

2. Electric values

- 2.1. Nominal centre frequency f_0 : 75.0 MHz
- 2.2. **Pass band**
 - 2.2.1. Bandwidth between 6 dB - frequencies: $> f_0 \pm 18.0$ kHz
 - 2.2.2. Ripple: < 2.0 dB at $f_0 \pm 12.0$ kHz
 - 2.2.3. Insertion loss: < 6.0 dB
(measured on smallest attenuation in pass band)
- 2.3. **Stop band**
 - 2.3.1. $f_0 \pm 50$ kHz: > 45 dB
 - 2.3.2. $f_0 \pm 65$ kHz: > 60 dB
 - 2.3.3. $f_0 \pm 80$ kHz: > 70 dB
 - 2.3.4. Alternate Attenuation: > 80 dB (except spurious)
 - 2.3.5. Spurious responses ($f_0 + 80 \dots + 3500$ kHz) : > 70 dB
- 2.4.1. Nomial input power level: +1 dBm
- 2.4.2. Maximal input power level: +16 dBm
- 2.5.1. Terminating impedance R/C (input): $50 \Omega // 0$ pF
- 2.5.2. Terminating impedance R/C (output): $1000 \Omega // 20$ pF
- 3. Marking on the case: manufacturer, date code
MQF 75.0-3600/08
- 4. Environment conditions: Corresponding to Telefilter CF001

Edited by: _____ date: _____ name: _____