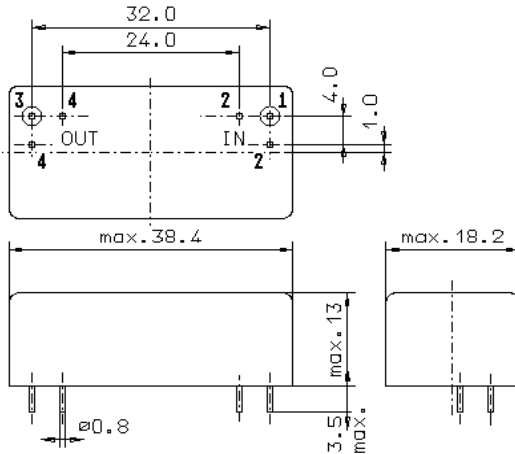


Specification for crystal filter:

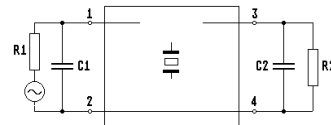
QF 21.4-0030/04

1. General

1.1. Case:



GM17



- | | |
|-----------------------------------|-----------------|
| 1.2. Type name: | QF 21.4-0030/04 |
| 1.3. Number of poles: | 4 |
| 1.4. Operating temperature range: | -20°C to +70°C |
| 1.5. Storage temperature range: | -35°C to +85°C |

2. Electric values

- | | |
|---|--|
| 2.1. Nominal centre frequency fo: | 21.4 MHz |
| 2.2. Pass band | |
| 2.2.1. Centre frequency fc: | 21.4 MHz \pm 500 Hz |
| 2.2.2. Bandwidth between 3 dB - frequencies: | $\geq f_c \pm 135$ Hz (at 23°C \pm 5°C) $\leq f_c \pm 165$ Hz (at 23°C \pm 5°C) |
| 2.2.3. Ripple: | Gaussian |
| 2.2.4. Insertion loss: (measured on smallest attenuation in pass band) | ≤ 15 dB T.B.D. after sampling |
| 2.3. Stop band | |
| 2.3.1. $f_o \pm 1$ kHz | ≥ 40 dB |
| 2.3.2. Alternate attenuation: | ≥ 80 dB (except spurious) |
| 2.3.3. Spurious responses: | ≥ 70 dB T.B.D. after sampling |
| 2.4. Terminating impedance (input and output): | 500 Ω // 10 pF |
| 3. Marking on the case: | firm, year week QF 21.4-0030/04 |
| 4. Environment conditions: | Corresponding to Telefilter CF001 |

Edited by: _____ date: _____ Name: _____